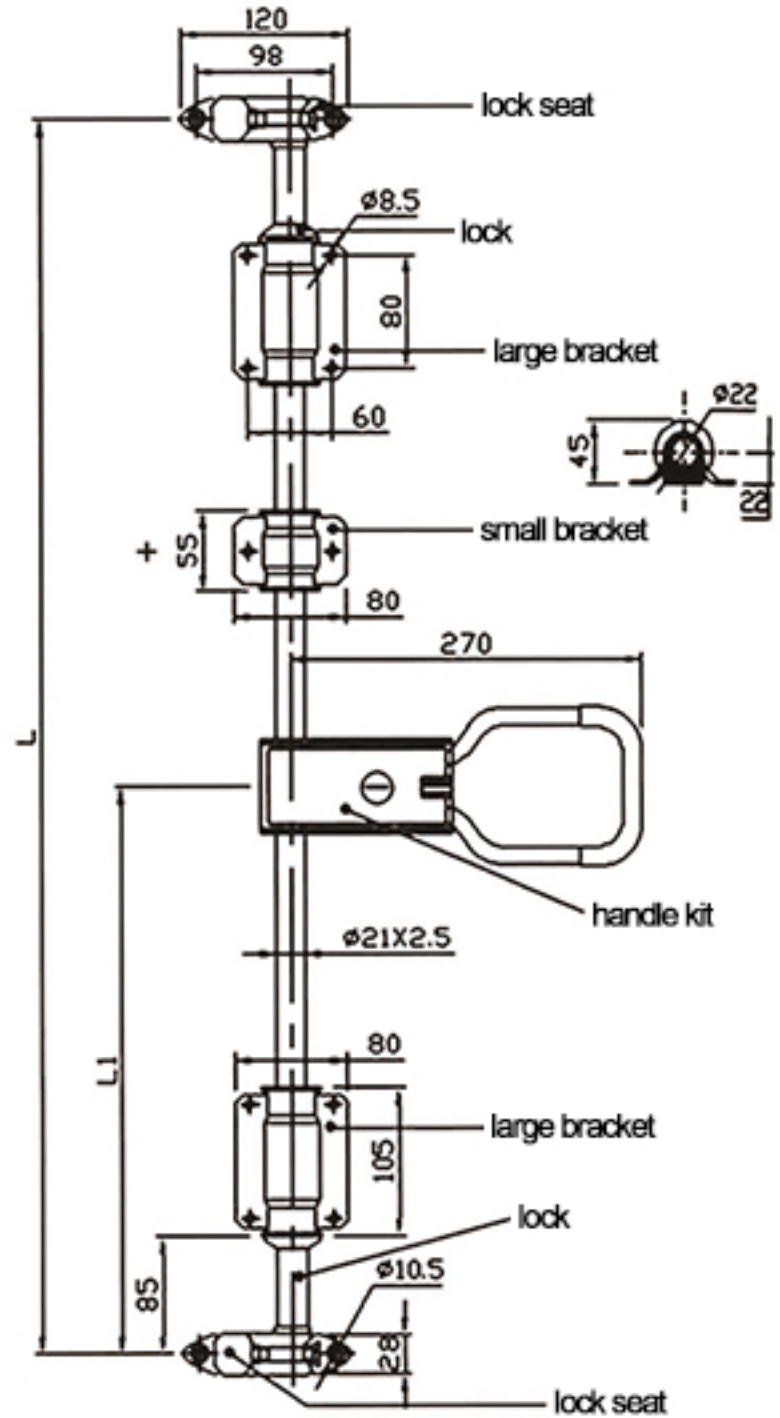


TECHNICAL DRAWING



Tower Industry
YOUR MANUFACTURING BASE IN CHINA

Sales@tower-machinery.com
www.tower-machinery.com

TW-DL891
TW-DL891S
Compression Lock

Weight: 4.0kg / 3.8kg

MATERIAL: Steel / stainless steel

FINISH: Zinc / polish